

Add The Check App To Your Home Screen

For quick access to IntouchCheck, you can add a shortcut to the home screen on your mobile device.

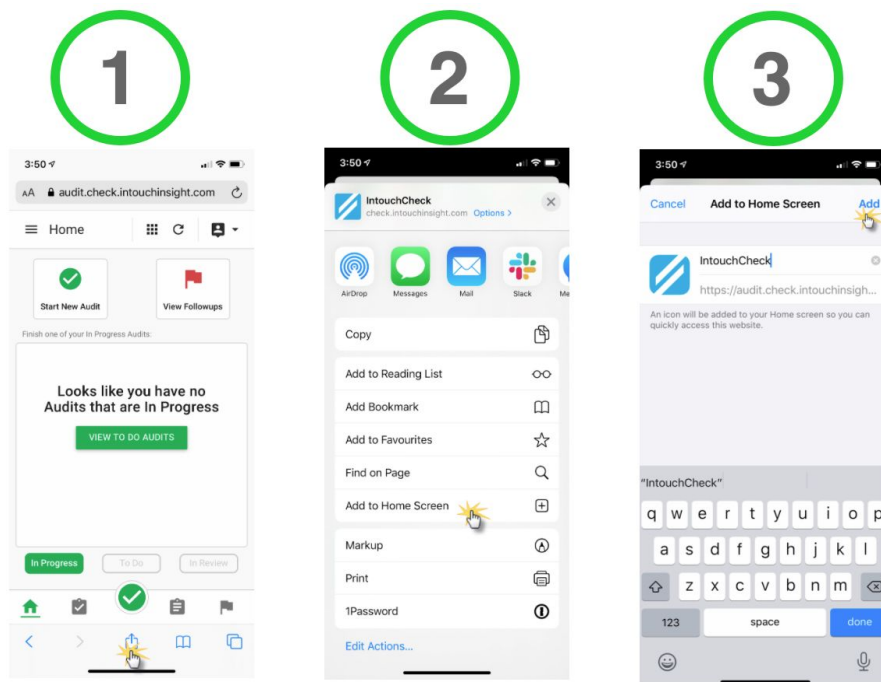
On your device:

- Go to <https://audit.check.intouchinsight.com>; you will be redirected to the Intouch login page.
- Enter your username and password.

You will automatically be redirected to Check after you've logged in.

On an iPhone/iPad (using Safari):

1. Tap the **Share** icon once the IntouchCheck website loads. You can find the share icon toward the bottom of the screen in iPhone devices, and within the address bar on iPad devices. This will bring you to a list of actions.
2. Tap the **Add to Home Screen** option. *If you do not see the **Add to Home Screen** option, scroll down to reveal more options.*
3. Tap the **Add** option to add the icon to your device home screen. The application will close and take you to your home screen where you should now see the shortcut to IntouchCheck that you've added.

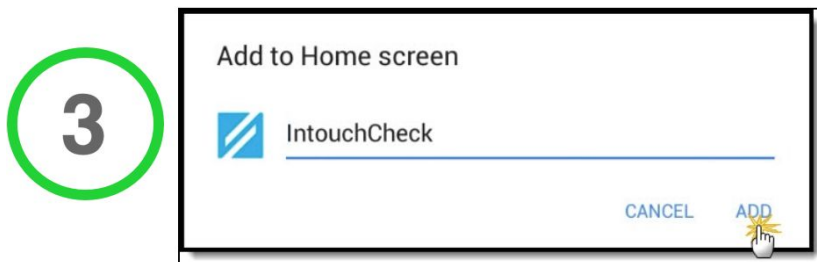
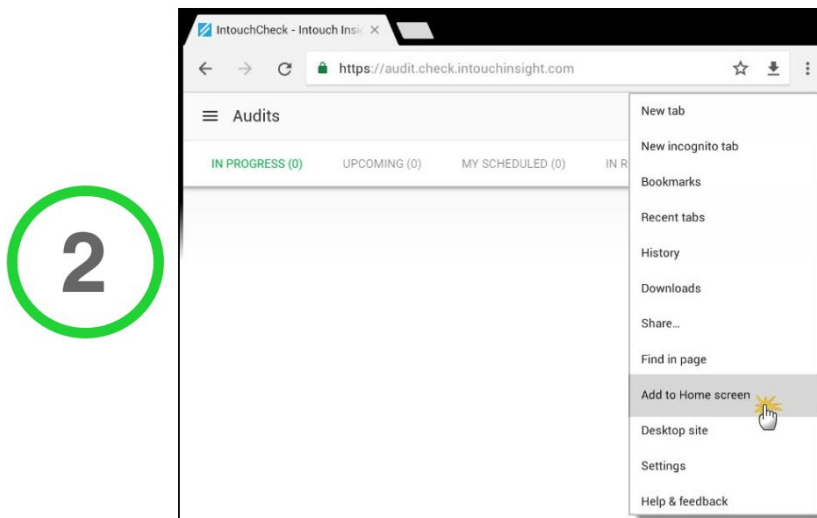
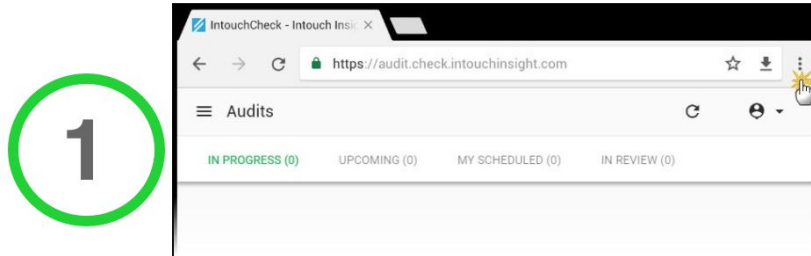


Additional Notes:

1. When operating the IntouchCheck application from both your device browser as well as from a home screen tile, these are treated as two separate devices. Be sure to save your work frequently to ensure that your in-progress audits are available between the two options as well as on other devices.
2. You will be required to log in again if you have logged out or your session times out, but the shortcut will automatically redirect you to the Check app each time you log in.

On an Android device (using Google Chrome):

1. Tap the **Action Menu** (triple dot icon) once the IntouchCheck website loads.
2. Tap tap 'Add to Home screen' option.
3. Tap the **Add** option. If you navigate to your home screen, you should now see the shortcut to IntouchCheck that you've added.



Additional Notes:

1. When operating the IntouchCheck application from both your device browser as well as from a home screen tile, these are treated as two separate devices. Be sure to save your work frequently to ensure that your in-progress audits are available between the two options as well as on other devices.
2. You will be required to log in again if you have logged out or your session times out, but the shortcut will automatically redirect you to the Check app each time you log in.